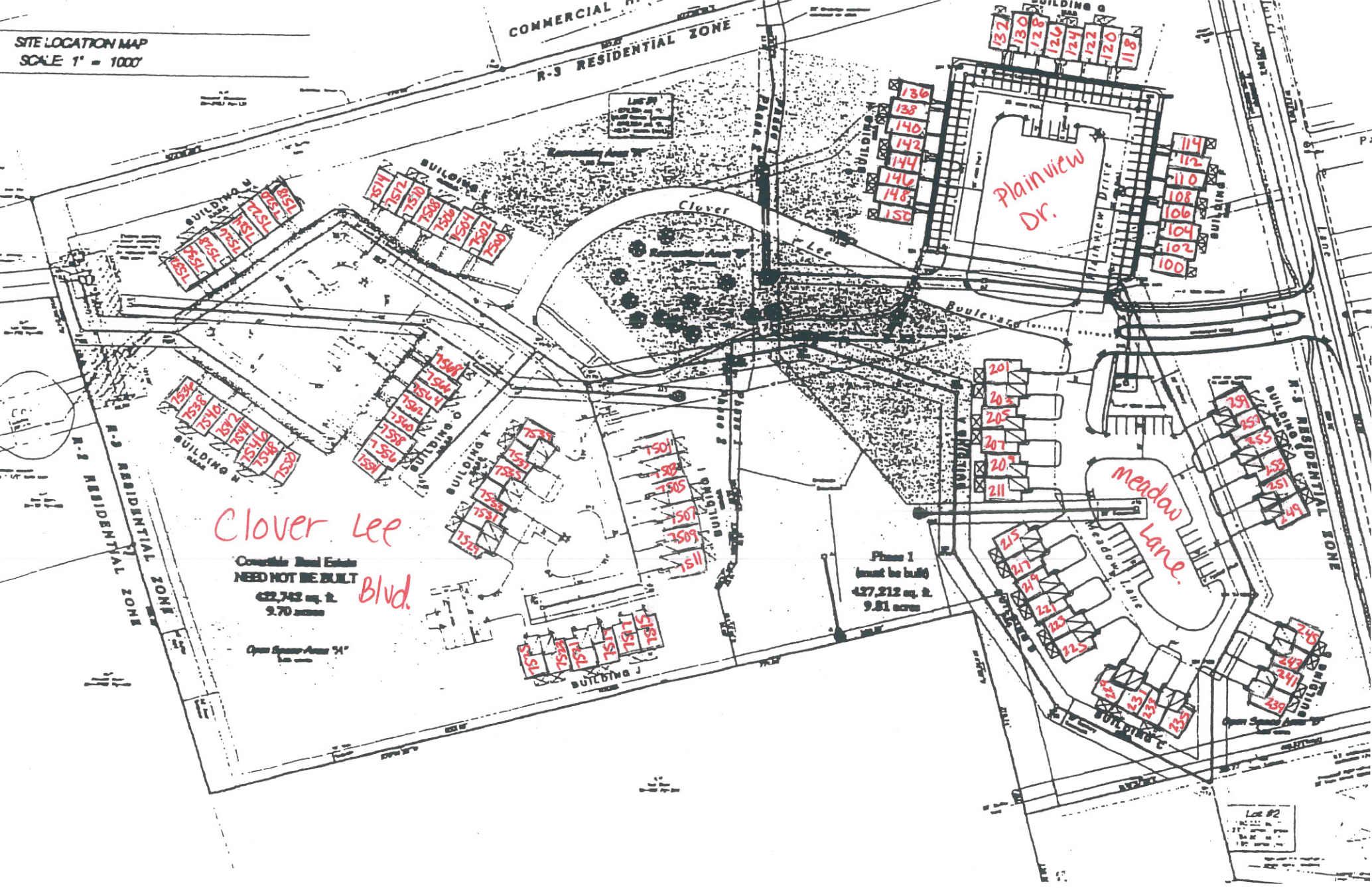


SITE LOCATION MAP
SCALE 1" = 1000'

COMMERCIAL ZONE
R-3 RESIDENTIAL ZONE



Clover Lee Blvd.
Convertible Residential
NEED NOT BE BUILT
622,742 sq. ft.
9.70 acres

Phase 1
(must be built)
437,212 sq. ft.
9.81 acres

Plainview Dr.

Meadow Lane.

Lot #2